

Fermat-1_RM_200MD_Log

Format: Fermat-1 RM Resistivity Log

Vertical Scale: 1:200

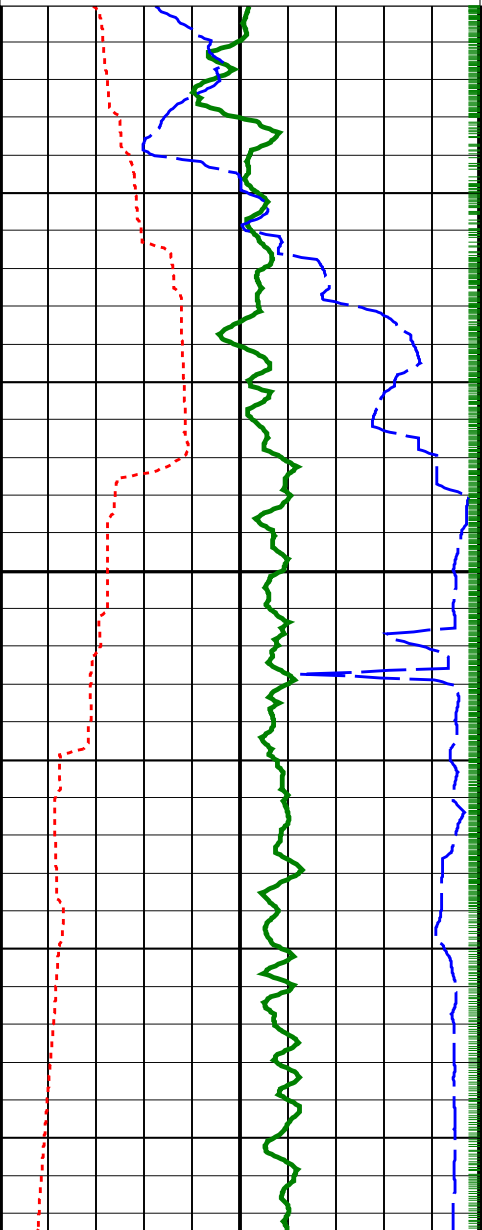
Graphics File Created: 29-Dec-2008 20:25

PIP SUMMARY

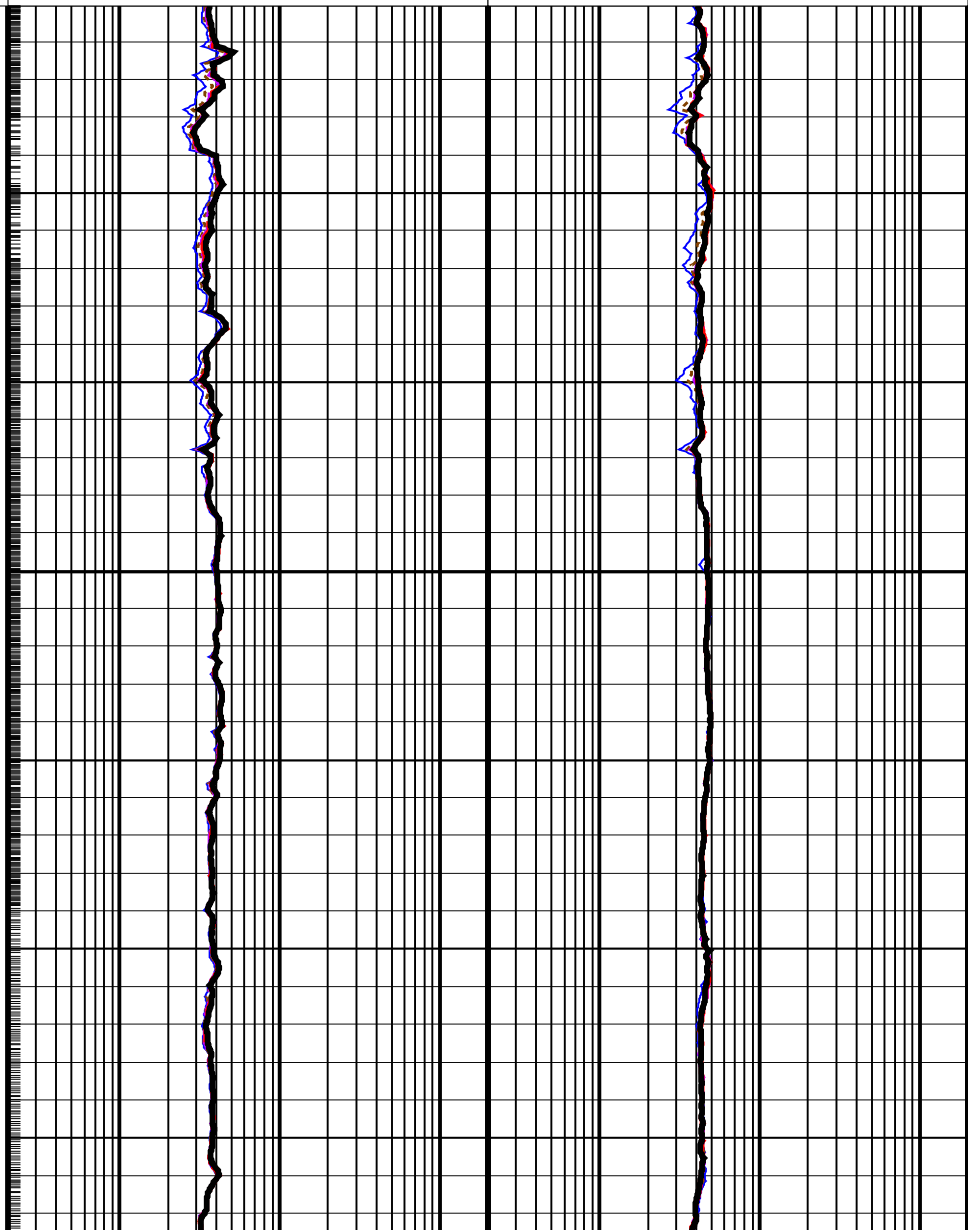
├ ARC Gamma Ray Samples

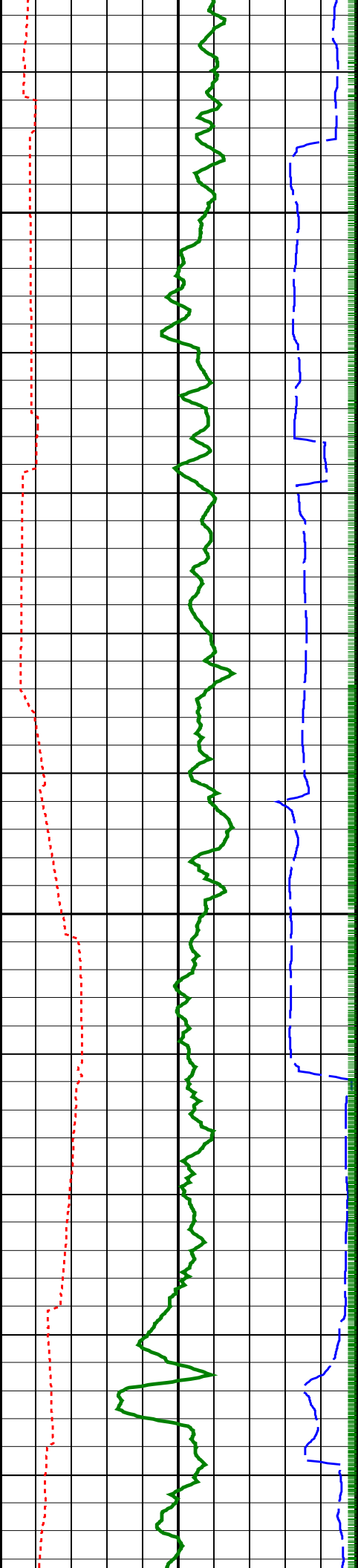
└ ARC Resistivity Samples

| | | |
|---|---|---|
| | ARC Phase-Shift Resistivity 40-in. at 2 MHz (P40H) 0.2 (OHMM) 200 | ARC Attenuation Resistivity 40-in. at 2 MHz (A40H) 0.2 (OHMM) 200 |
| | ARC Phase-Shift Resistivity 34-in. at 2 MHz (P34H) 0.2 (OHMM) 200 | ARC Attenuation Resistivity 34-in. at 2 MHz (A34H) 0.2 (OHMM) 200 |
| | ARC Phase-Shift Resistivity 28-in. at 2 MHz (P28H) 0.2 (OHMM) 200 | ARC Attenuation Resistivity 28-in. at 2 MHz (A28H) 0.2 (OHMM) 200 |
| | ARC Phase-Shift Resistivity 22-in. at 2 MHz (P22H) 0.2 (OHMM) 200 | ARC Attenuation Resistivity 22-in. at 2 MHz (A22H) 0.2 (OHMM) 200 |
| | ARC Phase-Shift Resistivity 16-in. at 2 MHz (P16H) 0.2 (OHMM) 200 | ARC Attenuation Resistivity 16-in. at 2 MHz (A16H) 0.2 (OHMM) 200 |
| Rate of Penetration, Averaged over Last 5ft (ROP5_RM) 200 (M/HR) 0 | | |
| ARC Resistivity Time After Bit (TAB_ARC_RES) 0 (HR) 10 | | |
| ARC Gamma Ray (GR_ARC) 0 (GAPI) 200 | | |



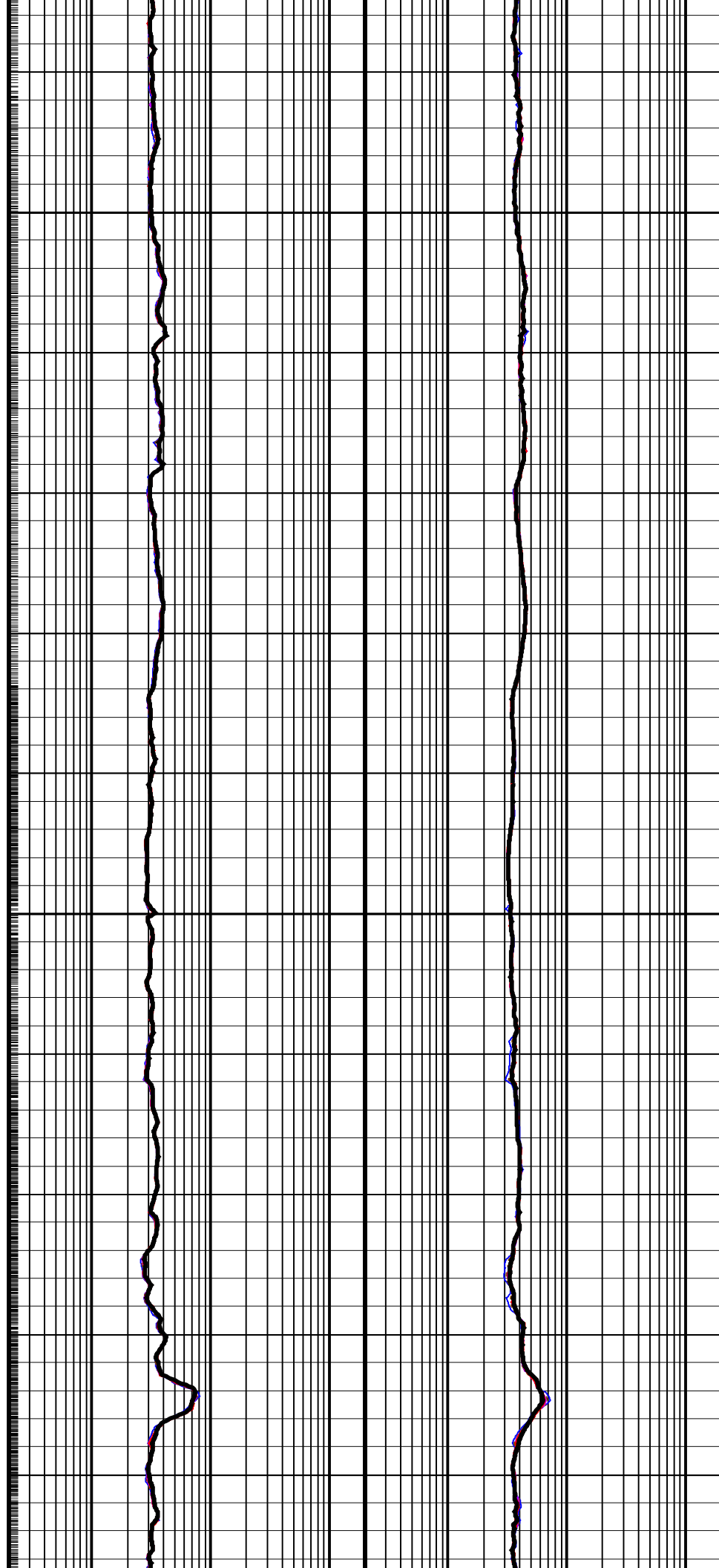
2400

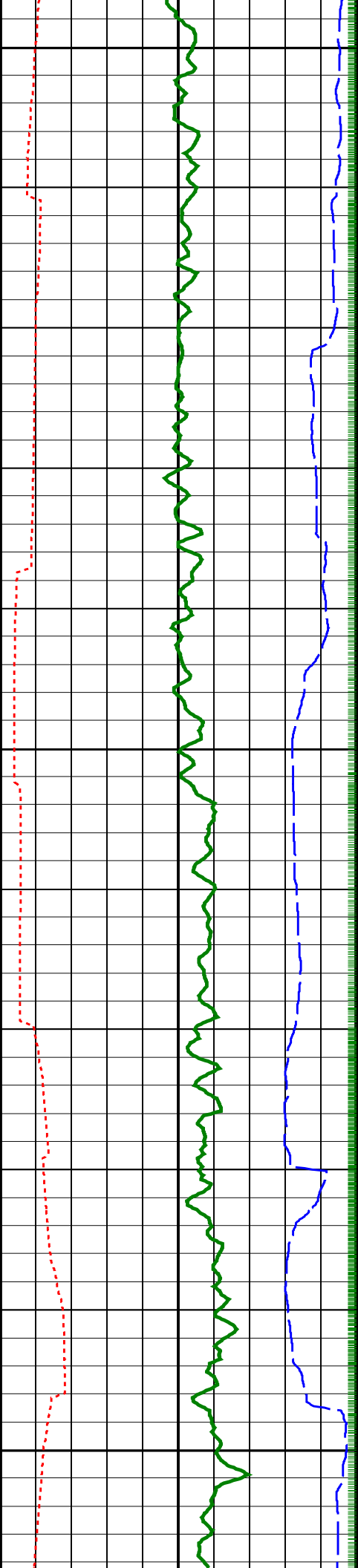




2425

2450

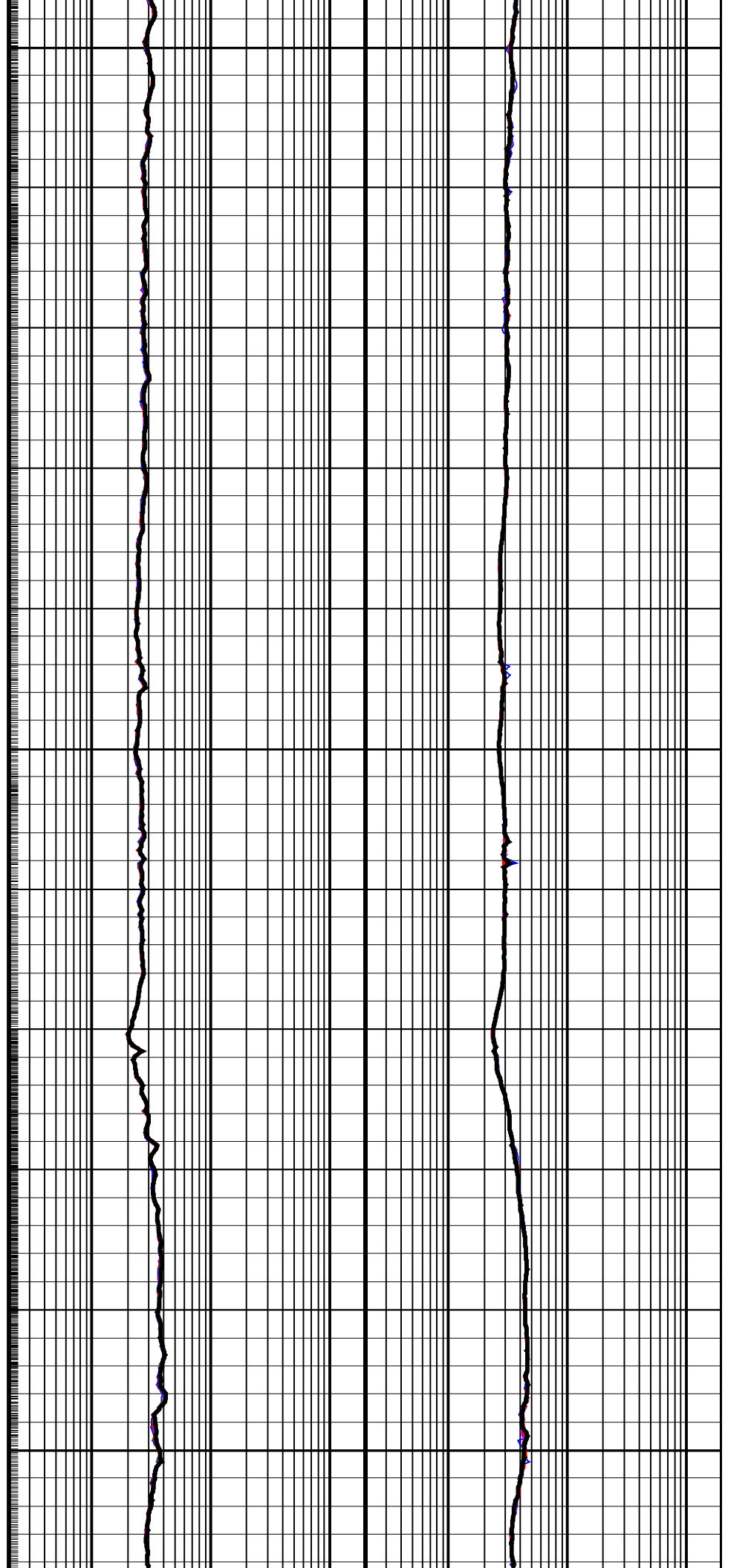


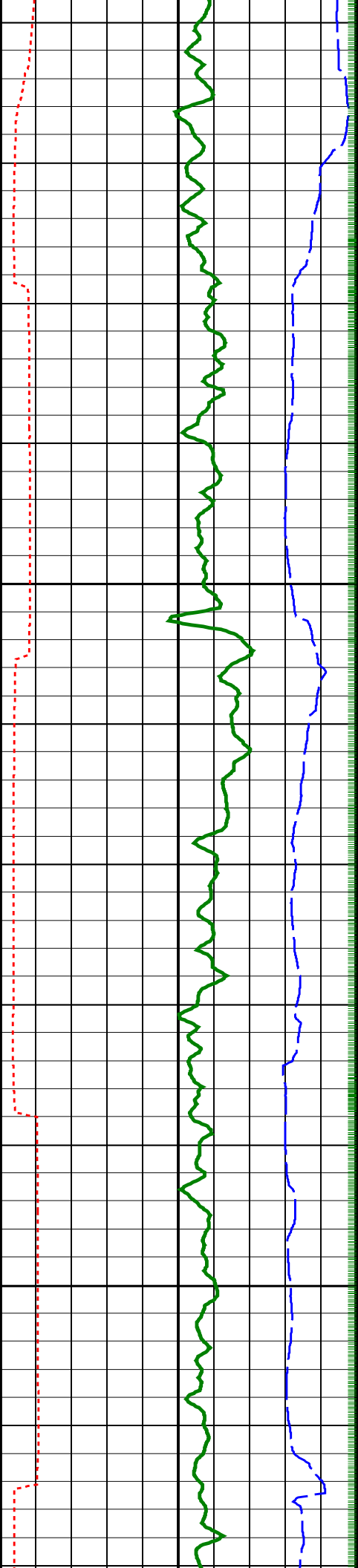


2475

2500

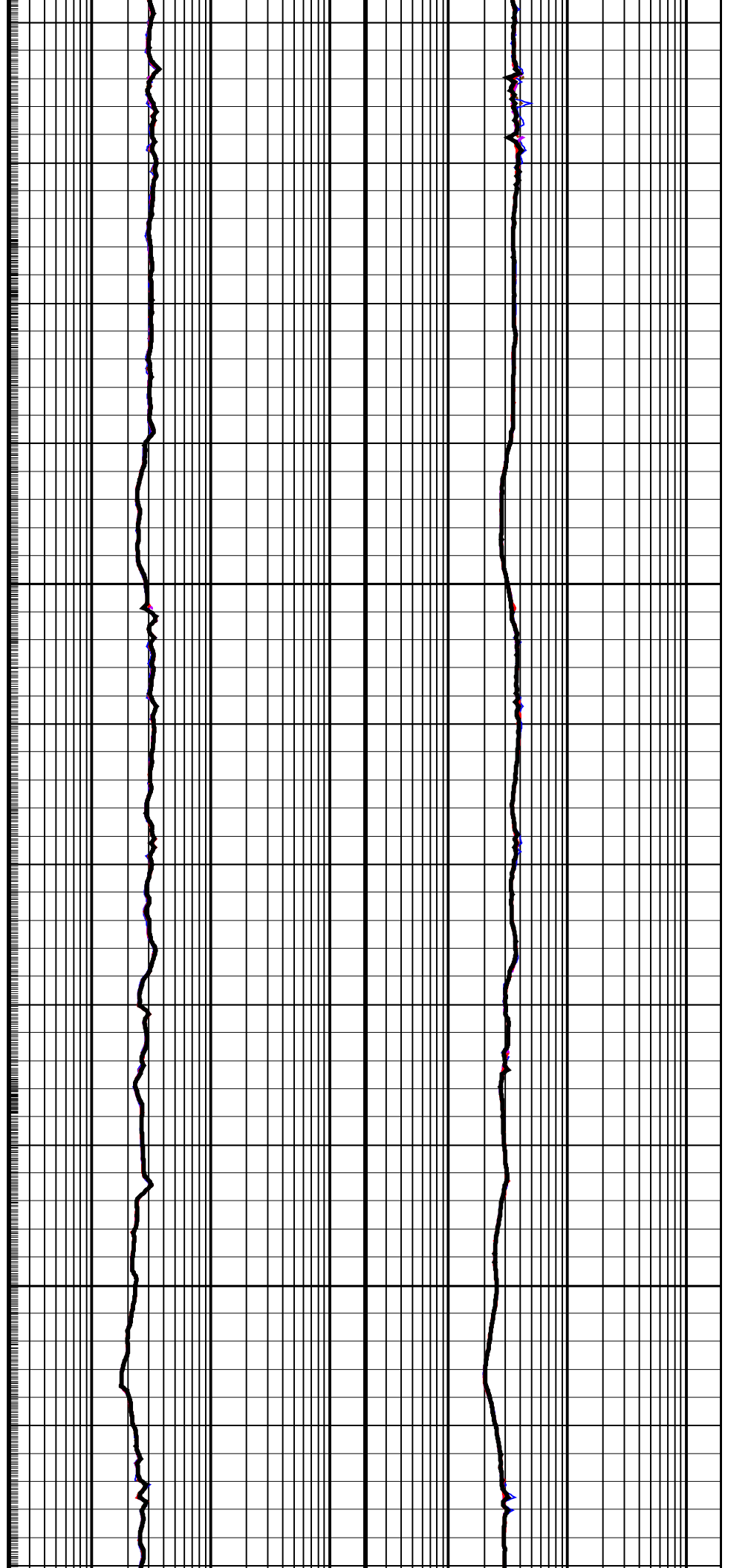
2525

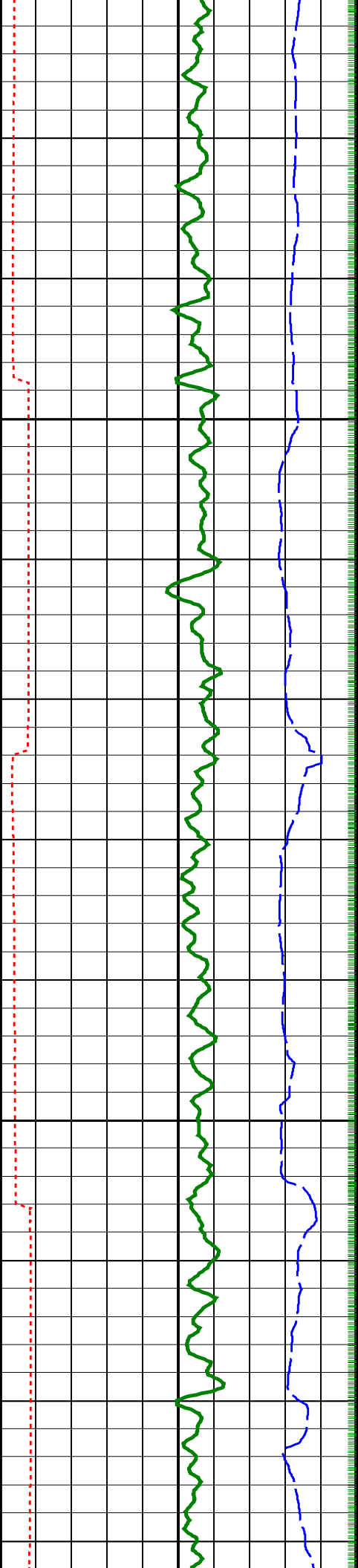




2550

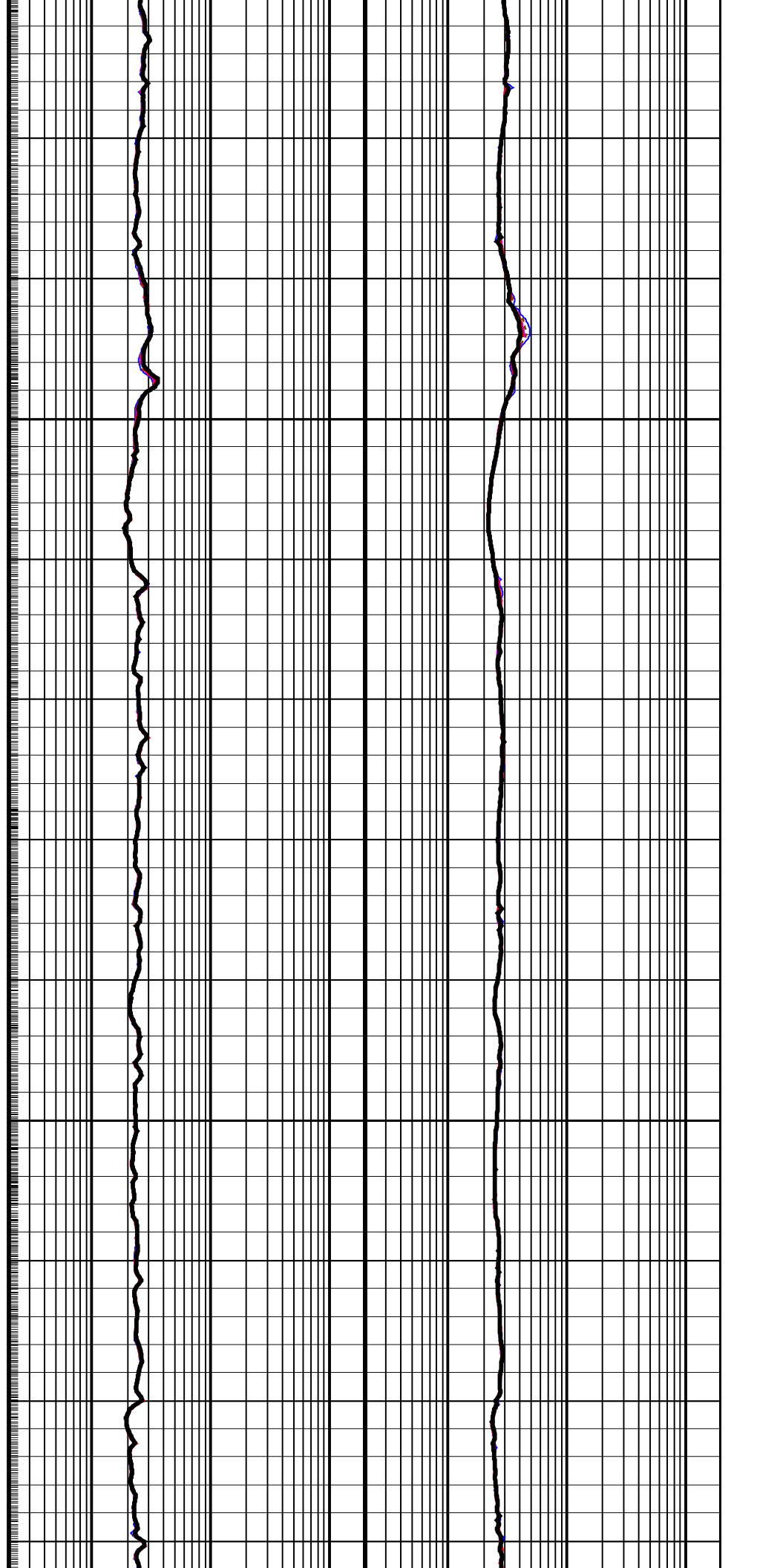
2575

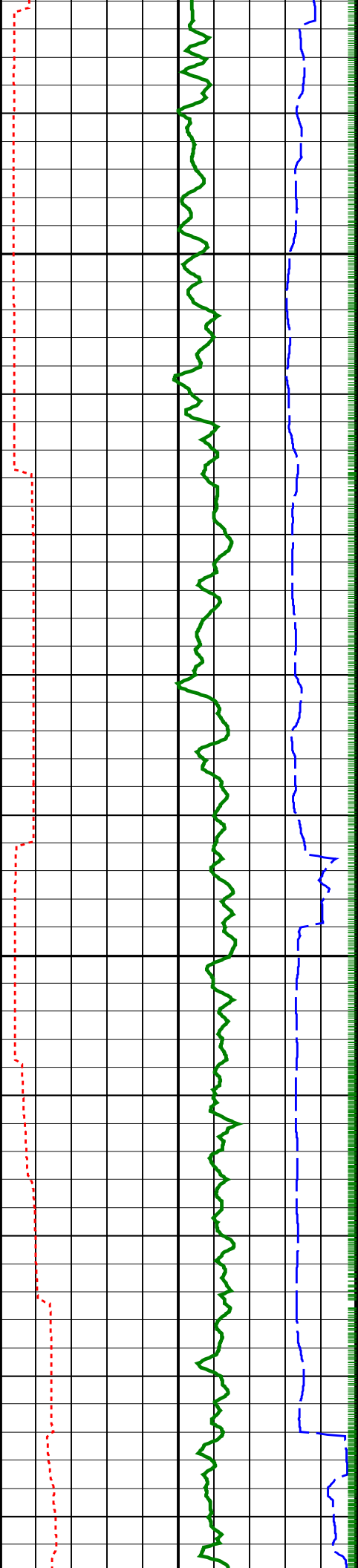




2600

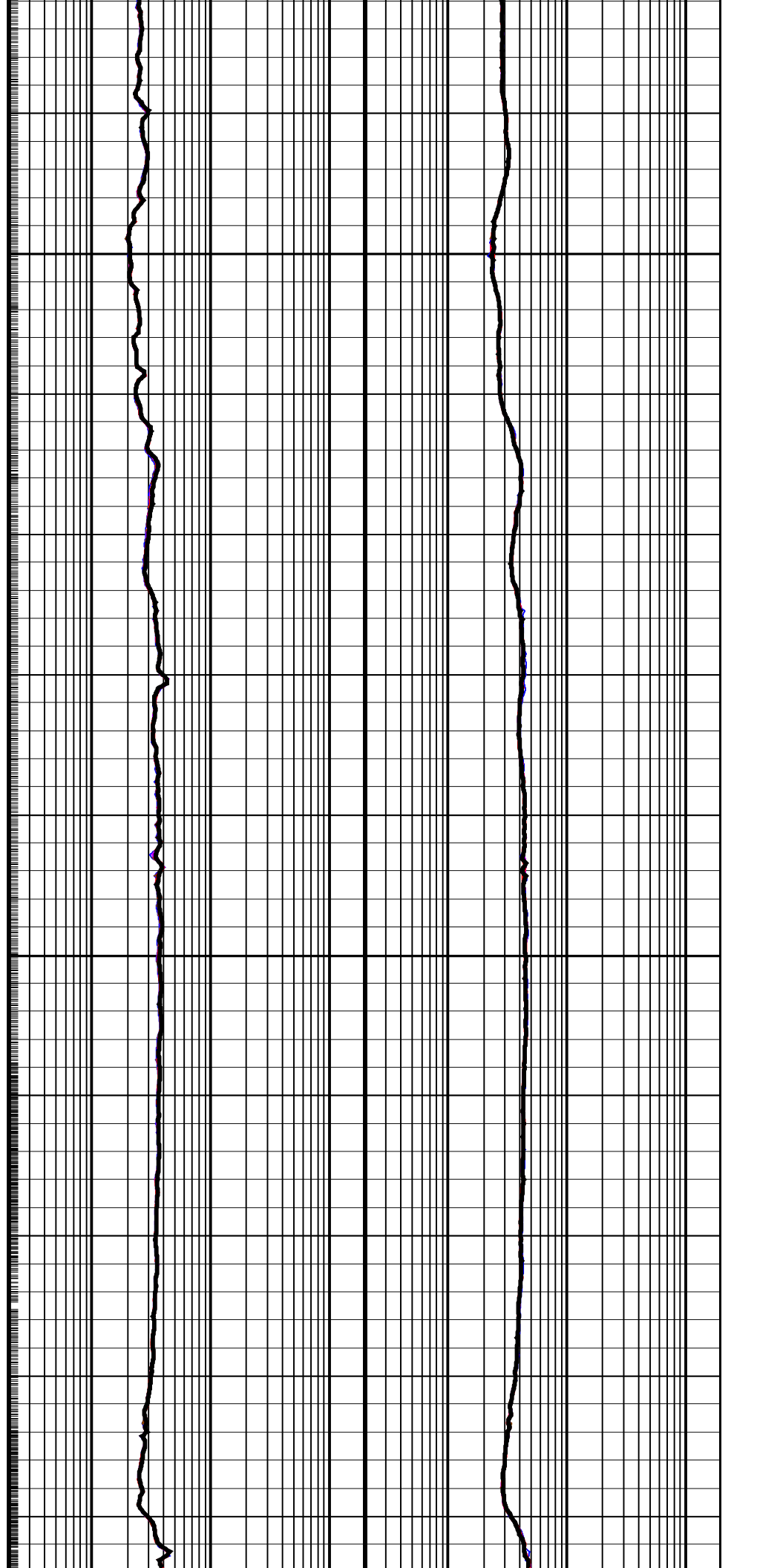
2625

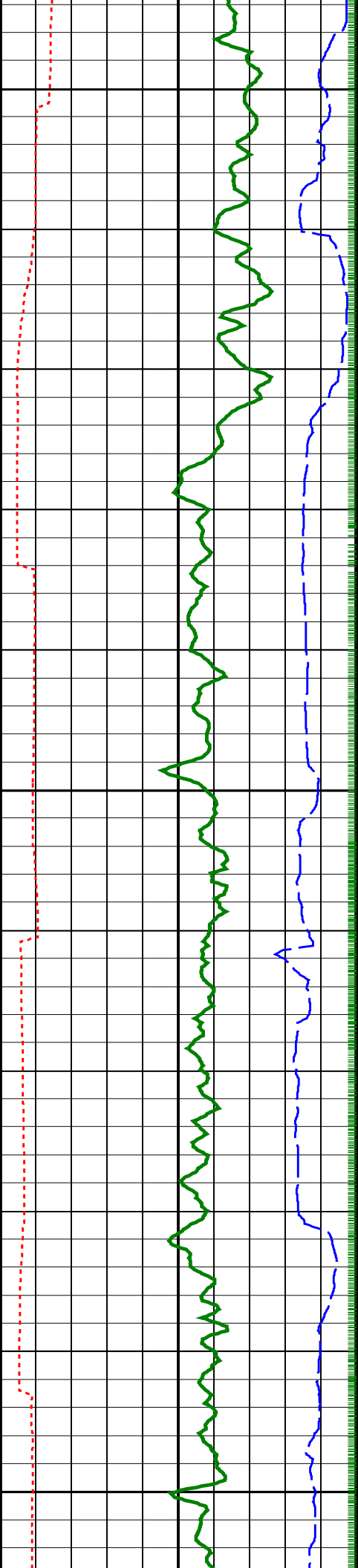




2650

2675

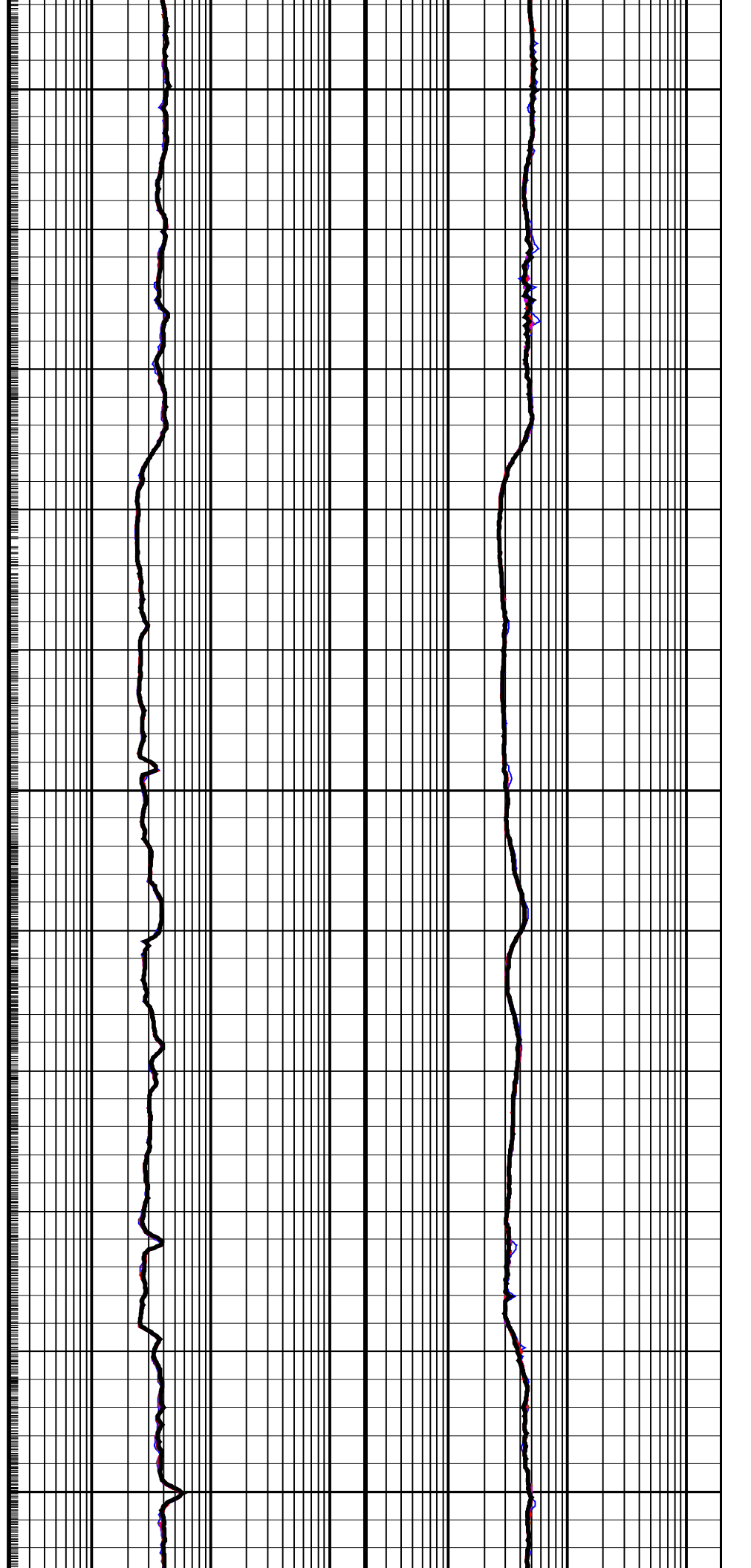


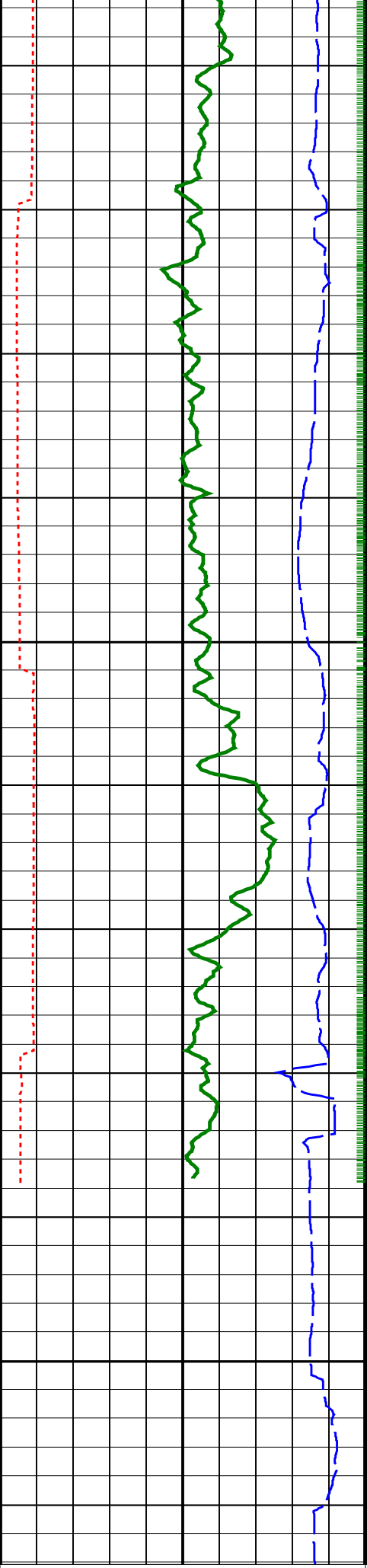


2700

2725

2750





2775

2800



ARC Gamma Ray (GR_ARC)

ARC Phase-Shift Resistivity 16-in. at 2 MHz (P16H)

ARC Attenuation Resistivity 16-in. at 2 MHz (A16H)

| | |
|---|-----|
| (GAPI) | 200 |
| ARC Resistivity Time After Bit (TAB_ | |
| ARC_RES) | |
| 0 | 10 |
| (HR) | |
| Rate of Penetration, Averaged over Last | |
| 5ft (ROP5_RM) | |
| 200 | 0 |
| (M/HR) | |

| | | | | | |
|---|--------|-----|---|--------|-----|
| 0.2 | (OHMM) | 200 | 0.2 | (OHMM) | 200 |
| ARC Phase-Shift Resistivity 22-in. at 2 | | | ARC Attenuation Resistivity 22-in. at 2 | | |
| MHz (P22H) | | | MHz (A22H) | | |
| 0.2 | (OHMM) | 200 | 0.2 | (OHMM) | 200 |
| ARC Phase-Shift Resistivity 28-in. at 2 | | | ARC Attenuation Resistivity 28-in. at 2 | | |
| MHz (P28H) | | | MHz (A28H) | | |
| 0.2 | (OHMM) | 200 | 0.2 | (OHMM) | 200 |
| ARC Phase-Shift Resistivity 34-in. at 2 | | | ARC Attenuation Resistivity 34-in. at 2 | | |
| MHz (P34H) | | | MHz (A34H) | | |
| 0.2 | (OHMM) | 200 | 0.2 | (OHMM) | 200 |
| ARC Phase-Shift Resistivity 40-in. at 2 | | | ARC Attenuation Resistivity 40-in. at 2 | | |
| MHz (P40H) | | | MHz (A40H) | | |
| 0.2 | (OHMM) | 200 | 0.2 | (OHMM) | 200 |

PIP SUMMARY

- + ARC Gamma Ray Samples
- + ARC Resistivity Samples

IDEAL Version: ID13_0C_14
IDF